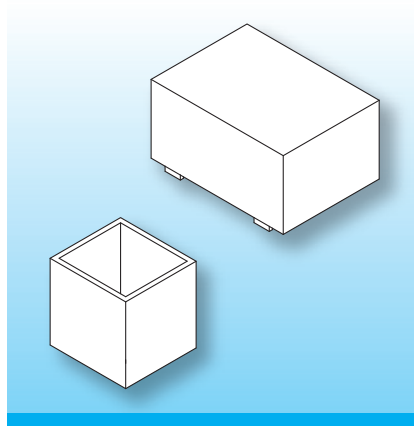


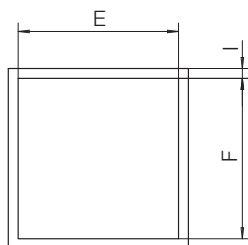
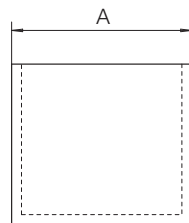
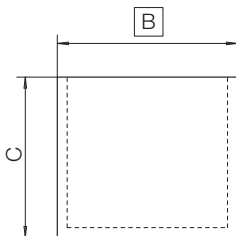
Standard Potting Boxes Part 2

The boxes are made in gfr Polyamide PA66 of type p6g (RTI long-range temperature +125 °C). Special materials and designs on request, dimensions in mm/*inch*.



The potting boxes can be used to your special requirements. In particular they are suitable for potting safety transformers of the EE/M series to meet required creepage and clearance dimensions. Should you need more detailed information please ask for our EE/M-catalogue. To process your order correctly please indicate type of potting box and order-code.

Type I	Order-Code	A	B	C	E	F	I
EE 12.6/11a/12.0/p6g	09780-024	14.4 0.567	14.4 0.567	13.0 0.512	13.0 0.512	13.0 0.512	0.8 0.031
Vgh. 16.0/16.0/14.0/p6g	93001-024	17.6 0.693	17.6 0.693	14.8 0.583	16.0 0.630	16.0 0.630	0.8 0.031
EE 16/11a/14.0/p6g	09880-024	17.8 0.701	17.8 0.701	14.8 0.583	16.6 0.654	16.6 0.654	0.6 0.024
Vgh. 20.6/19.6/16.3/p6g	93005-024	22.0 0.866	21.0 0.827	17.0 0.669	19.6 0.772	20.6 0.811	0.7 0.028
Kgh. 23.7/23.7/31.1/p6g	93020-024	25.3 0.996	25.3 0.996	31.8 1.252	23.8 0.937	23.8 0.937	0.8 0.031
KGa 27.6x27.6x23.8/p6g	93193-024	29.0 1.142	29.0 1.142	24.5 0.965	27.6 1.087	27.6 1.087	0.7 0.028



Type I

© 08/2012 by NORWE GmbH

All dimensions in mm/inch

The permissible deviations according to DIN 16901 apply as tolerances

Warranties:
refer to Terms and Conditions of Sale



Valid version of data sheet online

QR Online-Version

NORWE GmbH

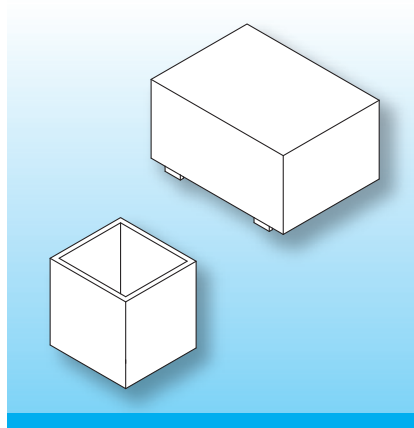
Postfach 13 56
51691 Bergneustadt
Paulstraße 5, Pernze
51702 Bergneustadt
Deutschland
Telefon +49 (0) 27 63-807-0
Telefax +49 (0) 27 63-807-77
E-mail verkauf@norwe.de
Internet www.norwe.de
www.norwe.eu

NORWE Inc.

P.O. Box 25 11
North Canton, OH 44720-0511
United States of America
Telefon +1-330 497-8113
Telefax +1-330 305-0592
E-mail usa@norwe.com
Internet www.norwe.com

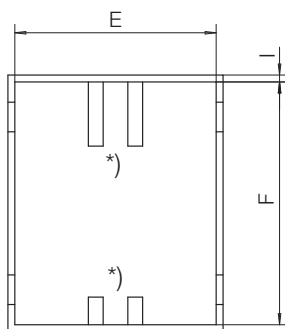
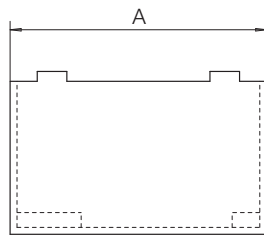
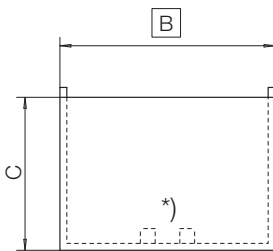
Standard Potting Boxes Part 2

The boxes are made in gfr Polyamide PA66 of type p6g (RTI long-range temperature +125 °C). Special materials and designs on request, dimensions in mm/*inch*.



The potting boxes can be used to your special requirements. In particular they are suitable for potting safety transformers of the EE/M series to meet required creepage and clearance dimensions. Should you need more detailed information please ask for our EE/M-catalogue. To process your order correctly please indicate type of potting box and order-code.

Type II	Order-Code	A	B	C	E	F	I
EE 20/Mf/14.8/p6g	10099-024	26.0 1.024	21.8 0.858	15.5 0.610	20.4 0.803	24.6 0.969	0.7 0.028
EE 20/Mf/14.8/p6g	10090-024	26.0 1.024	21.8 0.858	15.5 0.610	20.4 0.803	24.6 0.969	0.7 0.028
EE 20/Mf/17.8/p6g	10091-024	26.0 1.024	21.8 0.858	18.5 0.728	20.4 0.803	24.6 0.969	0.7 0.028



Type II

*)
only
10090
10091

© 08/2012 by NORWE GmbH

All dimensions in mm/inch

The permissible deviations according to DIN 16901 apply as tolerances

Warranties:
refer to Terms and Conditions of Sale



Valid version of
data sheet online

QR Online-Version

NORWE GmbH

Postfach 13 56
51691 Bergneustadt
Paulstraße 5, Pernze
51702 Bergneustadt

Deutschland

Telefon +49 (0) 27 63-807-0
Telefax +49 (0) 27 63-807-77
E-mail verkauf@norwe.de
Internet www.norwe.de
www.norwe.eu

NORWE Inc.

P.O. Box 25 11
North Canton, OH 44720-0511
United States of America

Telefon +1-330 497-8113
Telefax +1-330 305-0592
E-mail usa@norwe.com
Internet www.norwe.com