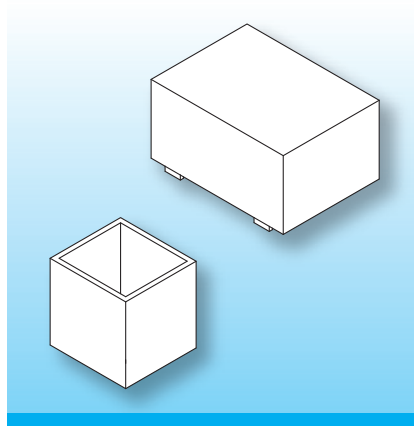


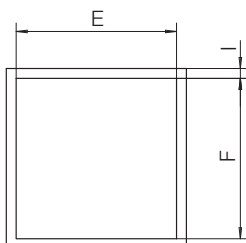
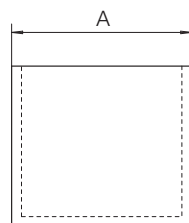
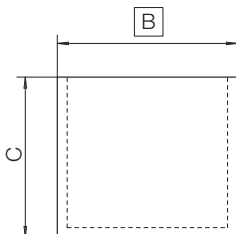
Standard Potting Boxes Part 2

The boxes are made in gfr Polyamide PA66 of type p6g (RTI long-range temperature +125 °C). Special materials and designs on request, dimensions in mm/*inch*.



The potting boxes can be used to your special requirements. In particular they are suitable for potting safety transformers of the EE/M series to meet required creepage and clearance dimensions. Should you need more detailed information please ask for our EE/M-catalogue. To process your order correctly please indicate type of potting box and order-code.

| Type I | Order-Code | A | B | C | E | F | I |
|-------------------------|------------|---------------|---------------|---------------|---------------|---------------|--------------|
| EE 12.6/11a/12.0/p6g | 09780-024 | 14.4 0.567 | 14.4 0.567 | 13.0 0.512 | 13.0 0.512 | 13.0 0.512 | 0.8 0.031 |
| Vgh. 16.0/16.0/14.0/p6g | 93001-024 | 17.6 0.693 | 17.6 0.693 | 14.8 0.583 | 16.0 0.630 | 16.0 0.630 | 0.8 0.031 |
| EE 16/11a/14.0/p6g | 09880-024 | 17.8 0.701 | 17.8 0.701 | 14.8 0.583 | 16.6 0.654 | 16.6 0.654 | 0.6 0.024 |
| Vgh. 20.6/19.6/16.3/p6g | 93005-024 | 22.0 0.866 | 21.0 0.827 | 17.0 0.669 | 19.6 0.772 | 20.6 0.811 | 0.7 0.028 |
| Kgh. 23.7/23.7/31.1/p6g | 93020-024 | 25.3 0.996 | 25.3 0.996 | 31.8 1.252 | 23.8 0.937 | 23.8 0.937 | 0.8 0.031 |
| KGa 27.6x27.6x23.8/p6g | 93193-024 | 29.0 1.142 | 29.0 1.142 | 24.5 0.965 | 27.6 1.087 | 27.6 1.087 | 0.7 0.028 |



Type I

© 08/2012 by NORWE GmbH

All dimensions in mm/inch

The permissible deviations according to DIN 16901 apply as tolerances

Warranties: refer to Terms and Conditions of Sale



Valid version of data sheet online

QR Online-Version

NORWE GmbH

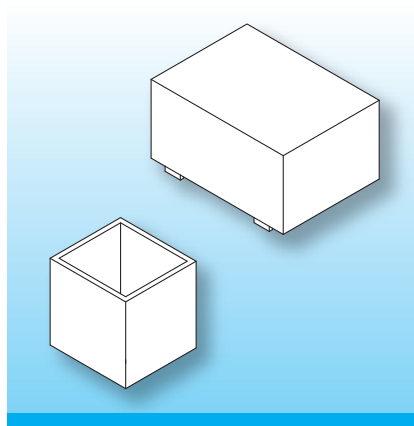
Postfach 13 56
51691 Bergneustadt
Paulstraße 5, Pernze
51702 Bergneustadt
Deutschland
Telefon +49 (0) 27 63-807-0
Telefax +49 (0) 27 63-807-77
E-mail verkauf@norwe.de
Internet www.norwe.de
www.norwe.eu

NORWE Inc.

P.O. Box 25 11
North Canton, OH 44720-0511
United States of America
Telefon +1-330 497-8113
Telefax +1-330 305-0592
E-mail usa@norwe.com
Internet www.norwe.com

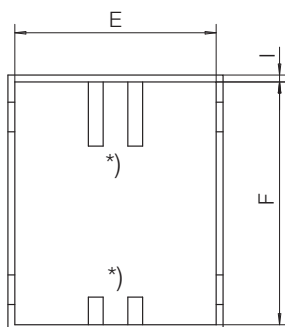
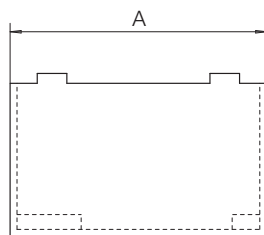
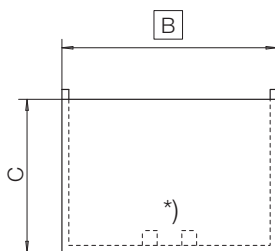
Standard Potting Boxes Part 2

The boxes are made in gfr Polyamide PA66 of type p6g (RTI long-range temperature +125 °C). Special materials and designs on request, dimensions in mm/*inch*.



The potting boxes can be used to your special requirements. In particular they are suitable for potting safety transformers of the EE/M series to meet required creepage and clearance dimensions. Should you need more detailed information please ask for our EE/M-catalogue. To process your order correctly please indicate type of potting box and order-code.

| Type II | Order-Code | A | B | C | E | F | I |
|-------------------|------------|---------------|---------------|---------------|---------------|---------------|--------------|
| EE 20/Mf/14.8/p6g | 10099-024 | 26.0 1.024 | 21.8 0.858 | 15.5 0.610 | 20.4 0.803 | 24.6 0.969 | 0.7 0.028 |
| EE 20/Mf/14.8/p6g | 10090-024 | 26.0 1.024 | 21.8 0.858 | 15.5 0.610 | 20.4 0.803 | 24.6 0.969 | 0.7 0.028 |
| EE 20/Mf/17.8/p6g | 10091-024 | 26.0 1.024 | 21.8 0.858 | 18.5 0.728 | 20.4 0.803 | 24.6 0.969 | 0.7 0.028 |



Type II

*)
only
10090
10091

© 08/2012 by NORWE GmbH

All dimensions in mm/inch

The permissible deviations according to DIN 16901 apply as tolerances

Warranties:
refer to Terms and Conditions of Sale



Valid version of
data sheet online

QR Online-Version

NORWE GmbH

Postfach 13 56
51691 Bergneustadt
Paulstraße 5, Pernze
51702 Bergneustadt

Deutschland

Telefon +49 (0) 27 63-807-0
Telefax +49 (0) 27 63-807-77
E-mail verkauf@norwe.de
Internet www.norwe.de
www.norwe.eu

NORWE Inc.

P.O. Box 25 11
North Canton, OH 44720-0511
United States of America

Telefon +1-330 497-8113
Telefax +1-330 305-0592
E-mail usa@norwe.com
Internet www.norwe.com