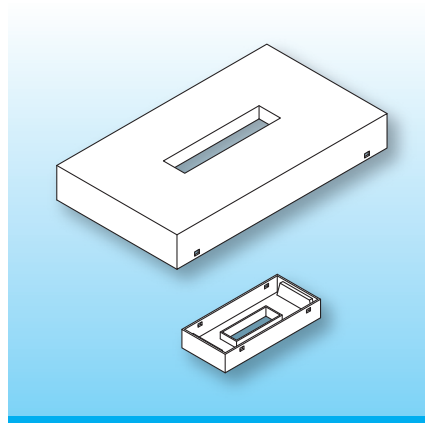


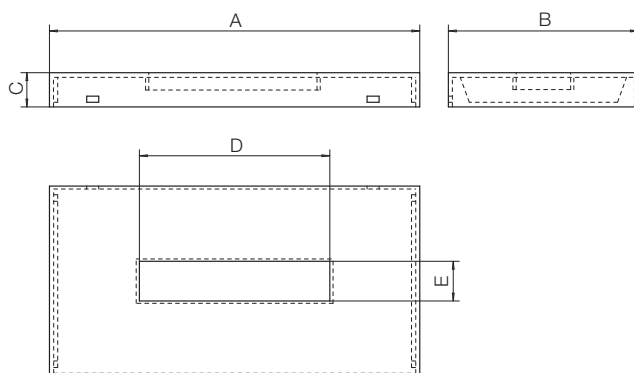
## PLANAR Boxes

The planar potting boxes are made in gfr Polyamide PA66 of type A RV250 nat. (RTI long-range temperature +100°C).  
Special materials and designs on request, dimensions in mm/*inch*.



This also allows the use of winding carriers, pcb, foil or copper stampings in the same winding design. The snap-on cover onto which product data and company logo can be printed, completes the assembly and protects the coil.

Type	Order-Code		A	B	C	D	E
Geh. E 14-5/A RV250 nat.	N0655-106	on request	20.4 0.803	10.5 0.413	3.6 0.142	5.3 0.209	3.3 0.130
Geh. E 18-10/A RV250 nat.	N0656-106	on request	30.6 1.205	13.5 0.531	3.6 0.142	10.4 0.409	4.3 0.169
Geh. E 22-16/A RV250 nat.	17039-106		35.7 1.406	16.2 0.638	6.0 0.236	16.3 0.642	5.3 0.209
Geh. E 32-20/A RV250 nat.	17040-106		45.8 1.803	24.6 0.969	5.8 0.228	21.0 0.827	6.8 0.268
Geh. E 38-25/A RV250 nat.	N0657-106	on request	55.0 2.165	29.8 1.173	8.2 0.323	26.3 1.035	8.2 0.323
Geh. E 43-28/A RV250 nat.	N0658-106	on request	61.1 2.406	34.2 1.346	10.0 0.394	29.0 1.142	8.8 0.346
Geh. E 58-38/A RV250 nat.	N0659-106	on request	86.5 3.406	49.5 1.949	12.3 0.484	39.4 1.551	8.8 0.346
Geh. E 64-50/A RV250 nat.	17044-106		101.7 4.004	52.2 2.055	9.4 0.370	52.3 2.059	10.9 0.429



© 08/2018 by NORWE GmbH

Warranties:  
refer to Terms and Conditions of Sale

**NORWE GmbH**

Postfach 13 56  
51691 Bergneustadt  
Paulstraße 5, Pernze  
51702 Bergneustadt  
Deutschland  
Telefon +49 (0) 27 63-807-0  
Telefax +49 (0) 27 63-807-77  
E-mail verkauf@norwe.de  
Internet www.norwe.de  
www.norwe.eu

**NORWE Inc.**

P.O. Box 25 11  
North Canton, OH 44720-0511  
United States of America  
Telefon +1-330 497-8113  
Telefax +1-330 305-0592  
E-mail usa@norwe.com  
Internet www.norwe.com



Valid version of  
data sheet online

QR Online-Version