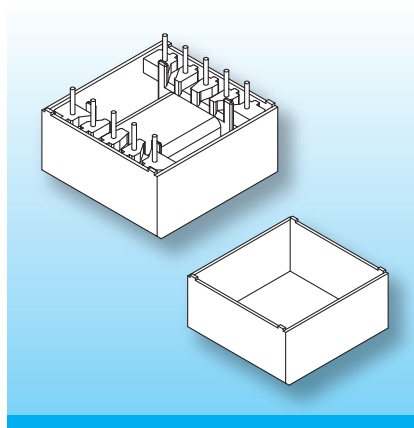


EFD Potting Boxes

As part of the continuous expansion of the EFD-series – in response to requests from the industries – we now plan to add potting boxes to the list of products.

The boxes are made in gfr Polyethylene Terephthalate PET of type rtg (RTI long-range temperature +155°C).

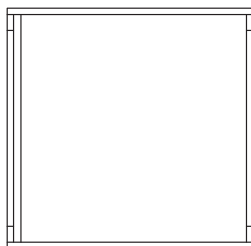
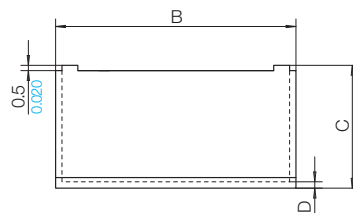
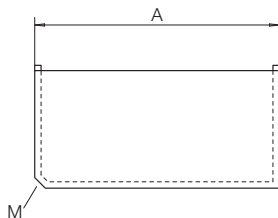
Special materials – e.g. irradiated cross-linked – and designs on request, dimensions in mm/[inch](#).



The dimensions of the potting boxes provide these features. All standard EFD coilformers are fitted with straight z6 pins or as an alternative with z8 pins. Together with the potting box a 1 mm longer solder-pin is provided for the coilformer.

Just new – the potting box for the core EFD 30 has been tooled up.

Type	Order-Code		A	B	C	D
EFD 15/Mf/rtg	N0192-087	on request	19.7 0.776	17.6 0.693	9.6 0.378	0.6 0.024
EFD 20/Mf/rtg	N0193-087	on request	23.2 0.913	22.7 0.894	11.6 0.457	0.6 0.024
EFD 25/Mf/rtg	N0194-087	on request	29.4 1.157	28.1 1.106	14.1 0.555	0.7 0.028
EFD 30/Mf/rtg	93345-087		34.6 1.362	33.4 1.315	14.2 0.559	0.8 0.031



© 01/2012 by NORWE GmbH

All dimensions in mm/inch

The permissible deviations according to DIN 16901 apply as tolerances

Warranties:
refer to Terms and Conditions of Sale

NORWE GmbH

Postfach 13 56
51691 Bergneustadt
Paulstraße 5, Pernze
51702 Bergneustadt
Deutschland
Telefon +49 (0) 27 63-807-0
Telefax +49 (0) 27 63-807-77
E-mail verkauf@norwe.de
Internet www.norwe.de
www.norwe.eu

NORWE Inc.

P.O. Box 25 11
North Canton, OH 44720-0511
United States of America
Telefon +1-330 497-8113
Telefax +1-330 305-0592
E-mail usa@norwe.com
Internet www.norwe.com