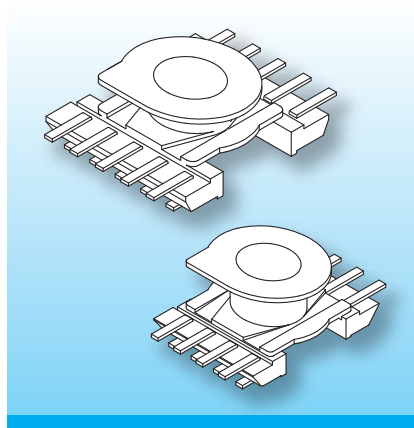


ER-SMD Coilformers (fu)

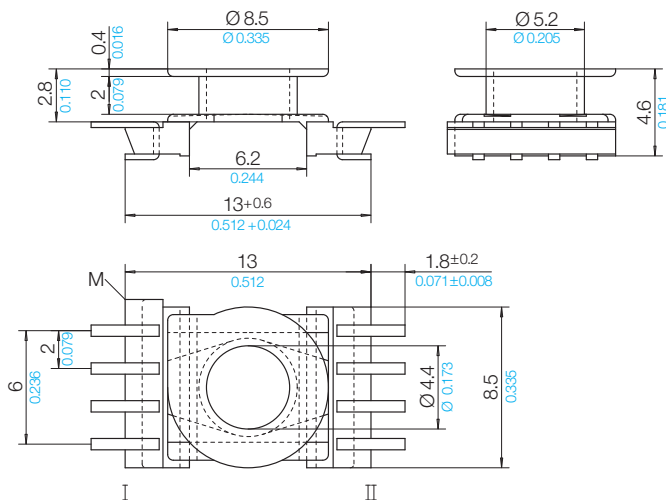
The coilformers are made in gfr Polyamide PA46 of type TE 250 F6 (RTI long-range temperature for V-0 (0.35) +65°C and for V-0 (0.75) +140°C) and are suitable for reflow soldering.

Pin material: tin bronze, tinned.
Special materials – e.g. irradiated cross-linked – and designs on request, dimensions in mm/*inch*.



The coilformers are fitted with U-shaped terminals. The two sides of the terminal allow automatic binding-on and soldering of the wires, leaving the pcb-side of the terminal free from tin. Instead of glueing the ferrites, use can be made of the SB-ER Spring-Clips.

Type	Order-Code	Accessories
Coilformer: ER 11/5-SMD2/1k/8f-625-/TE 250 F6 Solder-pin: fu625-67/ub	94221-096 75826-213	Spring-Clip SB-ER 11/5



Pin Connecting Surface

View pin-side

