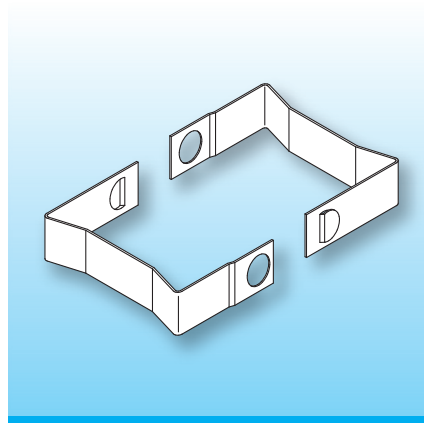



Clips FK-EC

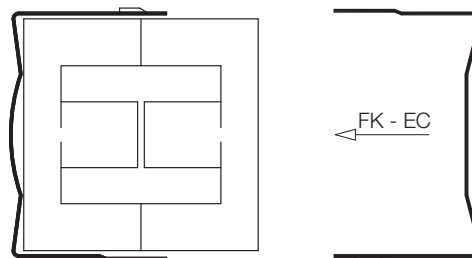
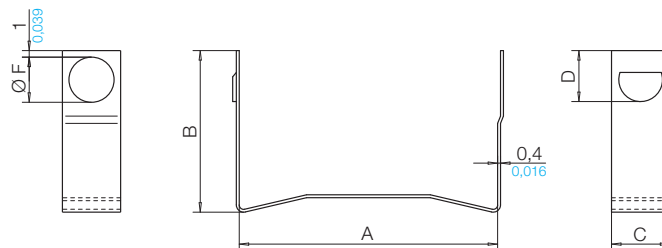
Suitable types of glues, such as Araldite, can be used to put EC cores together. Constant pressure must be maintained on the core-halves until the glue has hardened. More advantageous and economic are the easily assembled clips FK. They are in stainless steel and can be used for both horizontal and vertical assemblies. The clamping pressure on the core-halves remains practically constant regardless of temperature, and no pull is exerted on the coilformer.



Two clips are required per coilformer. A drop of glue may be used to connect coilformer and ferrite, also preventing frequency-noise. Special materials and design on request, dimensions in mm/inch.

When ordering please quote type and order-code.

Type	Order-Code	A	B	C	D	F
FK-EC 35/sa	78984-085	35.5 1.398	22.2 0.874	8.0 0.315	7.0 0.276	6.2 0.244
FK-EC 41/sa	78985-085	41.8 1.646	24.7 0.972	10.0 0.394	7.0 0.276	6.2 0.244
FK-EC 52/sa	78986-085	53.7 2.114	29.4 1.157	12.0 0.472	7.0 0.276	6.2 0.244
FK-EC 70/sa	N0168-085  on request	71.9 2.831	39.7 1.563	14.0 0.551	7.0 0.276	6.2 0.244



05 A 2 S / 05 A 2 G / 05 A 2 M / 05 A 2 K

© 08/2017 by NORWE GmbH

Warranties:
refer to Terms and Conditions of Sale

NORWE GmbH

Postfach 13 56
51691 Bergneustadt
Paulstraße 5, Pernze
51702 Bergneustadt
Deutschland

Telefon +49 (0) 27 63-807-0
Telefax +49 (0) 27 63-807-77
E-mail verkauf@norwe.de
Internet www.norwe.de
www.norwe.eu

NORWE Inc.

P.O. Box 25 11
North Canton, OH 44720-0511
United States of America
Telefon +1-330 497-8113
Telefax +1-330 305-0592
E-mail usa@norwe.com
Internet www.norwe.com



Valid version of
data sheet online

QR Online-Version