

### Ordering Example

If you would like to order after having looked through this catalogue we require the following information to process your order correctly:

#### ● For unpinned Components:

Type of Component . . . . . e.g.:  
Order-Code . . . . . e.g.:

#### Example 1

EC 41/ec-/hv/p6g  
90215-024

#### Example 2

EC 35/-1/h11/p6g  
90213-024

#### ● For fully pinned Components (ex stock):

Type of Component . . . . . e.g.:  
Order-Code . . . . . e.g.:

**plus**

Type of Solder-pin / Solder-tag . . . . . e.g.:  
Order-Code Solder-pin / Solder-tag . . e.g.:

**plus**

text added . . . . .

EC 41/ec-/hv/p6g  
90215-024

ech/wd  
75403-261

“fully pinned”

EC 35/-1/h11/p6g  
90213-024

z112/ua  
73322-212

“fully pinned”

#### ● For Components with pins fitted in selected positions (not ex stock):

Type of Component . . . . . e.g.:  
Order-Code . . . . . e.g.:

**plus**

Type of Solder-pin / Solder-tag . . . . . e.g.:  
Order-Code Solder-pin / Solder-tag . . e.g.:

**plus**

Pin positions: . . . . . e.g.:

EC 41/ec-/hv/p6g  
90215-024

ech/wd  
75403-261

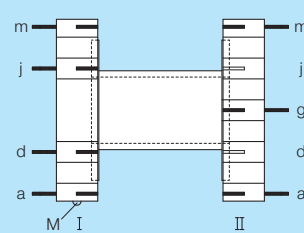
I adjm II agm

EC 35/-1/h11/p6g  
90213-024

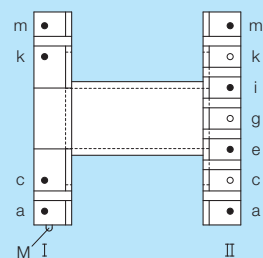
z112/ua  
73322-212

I ackm II aeim

#### Example 1



#### Example 2



#### © 12/2011 by NORWE GmbH

All dimensions in mm/inch

The permissible deviations according to DIN 16901 apply as tolerances

Warranties:  
refer to Terms and Conditions of Sale

#### NORWE GmbH

Postfach 13 56

51691 Bergneustadt

Paulstraße 5, Pernze

51702 Bergneustadt

Deutschland

Telefon +49 (0) 27 63-807-0

Telefax +49 (0) 27 63-807-77

E-mail verkauf@norwe.de

Internet www.norwe.de  
www.norwe.eu

#### NORWE Inc.

P.O. Box 25 11

North Canton, OH 44720-0511

United States of America

Telefon +1-330 497-8113

Telefax +1-330 305-0592

E-mail usa@norwe.com

Internet www.norwe.com