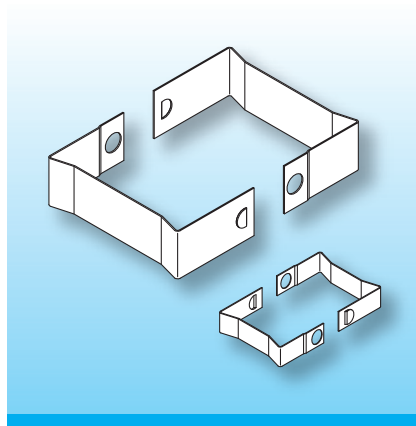


Clips FK-ETD

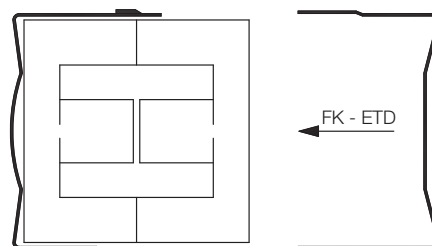
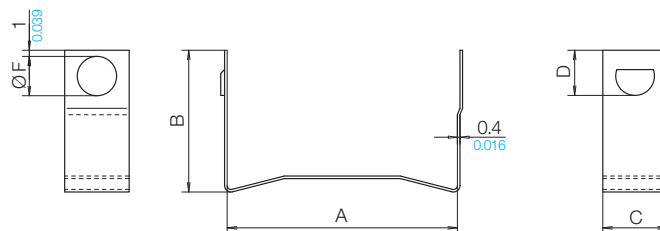
Suitable types of glues, such as Araldite, can be used to put the ETD cores together. Constant pressure must be maintained on the core-halves until the glue has hardened. More advantageous and economic are the easily assembled clips FK. They are in stainless steel and can be used for both horizontal and vertical assemblies.



The clamping pressure on the core-halves remains practically constant regardless of temperature, and no pull is exerted on the coilformer. Two clips are required per coilformer. A drop of glue may be used to connect coilformer and ferrite, also preventing frequency-noise. Other material thicknesses on request.

When ordering please quote type and order-code.

Type	Order-Code	A	B	C	D	F
FK-ETD 19/sa	78977-085	20.3 0.799	17.8 0.701	6.0 0.236	5.0 0.197	4.2 0.165
FK-ETD 24/sa	78978-085	25.2 0.992	18.6 0.732	6.0 0.236	5.0 0.197	4.2 0.165
FK-ETD 29/sa	78979-085	30.8 1.213	20.7 0.815	8.0 0.315	7.0 0.276	6.2 0.244
FK-ETD 34/sa	78980-085	35.0 1.378	22.5 0.886	10.0 0.394	7.0 0.276	6.2 0.244
FK-ETD 39/sa	78981-085	40.0 1.575	25.0 0.984	12.0 0.472	7.0 0.276	6.2 0.244



© 09/2012 by NORWE GmbH

All dimensions in mm/inch

The permissible deviations according to DIN 16901 apply as tolerances

Warranties:
refer to Terms and Conditions of Sale



Valid version of data sheet online

QR Online-Version

NORWE GmbH

Postfach 13 56
51691 Bergneustadt
Paulstraße 5, Pernze
51702 Bergneustadt
Deutschland

Telefon +49 (0) 27 63-807-0
Telefax +49 (0) 27 63-807-77
E-mail verkauf@norwe.de
Internet www.norwe.de
www.norwe.eu

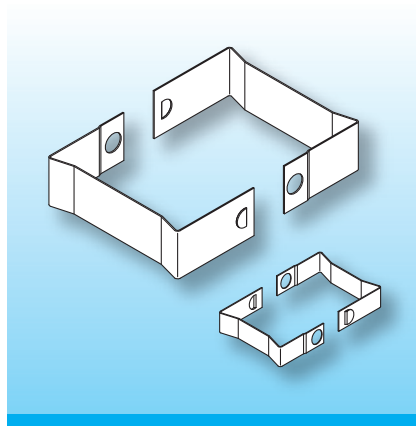
NORWE Inc.

P.O. Box 25 11
North Canton, OH 44720-0511
United States of America

Telefon +1-330 497-8113
Telefax +1-330 305-0592
E-mail usa@norwe.com
Internet www.norwe.com

Clips FK-ETD

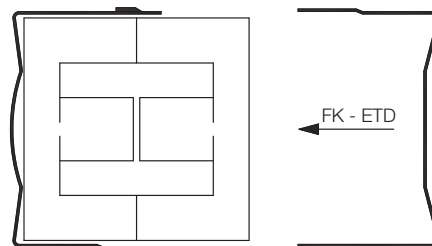
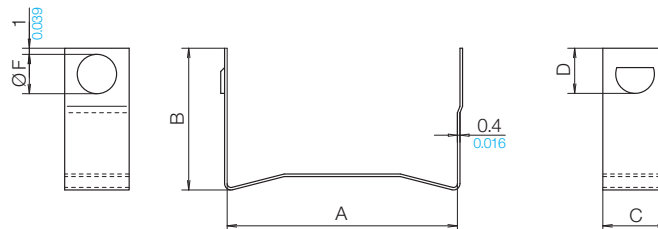
Suitable types of glues, such as Araldite, can be used to put the ETD cores together. Constant pressure must be maintained on the core-halves until the glue has hardened. More advantageous and economic are the easily assembled clips FK. They are in stainless steel and can be used for both horizontal and vertical assemblies.



The clamping pressure on the core-halves remains practically constant regardless of temperature, and no pull is exerted on the coilformer. Two clips are required per coilformer. A drop of glue may be used to connect coilformer and ferrite, also preventing frequency-noise. Other material thicknesses on request.

When ordering please quote type and order-code.

Type	Order-Code	A	B	C	D	F
FK-ETD 44/sa	78982-085	45.0 1.772	27.5 1.083	14.0 0.551	7.0 0.276	6.2 0.244
FK-ETD 49/sa	78983-085	49.8 1.961	29.7 1.169	16.0 0.630	7.0 0.276	6.2 0.244
FK-ETD 54/sa	78988-085	56.0 2.205	32.6 1.283	16.0 0.630	7.0 0.276	6.2 0.244
FK-ETD 59/sa	78989-085	61.4 2.417	35.8 1.409	16.0 0.630	7.0 0.276	6.2 0.244



© 09/2012 by NORWE GmbH

All dimensions in mm/inch

The permissible deviations according to DIN 16901 apply as tolerances

Warranties:
refer to Terms and Conditions of Sale



Valid version of
data sheet online

QR Online-Version

NORWE GmbH

Postfach 13 56
51691 Bergneustadt
Paulstraße 5, Pernze
51702 Bergneustadt
Deutschland

Telefon +49 (0) 27 63-807-0
Telefax +49 (0) 27 63-807-77
E-mail verkauf@norwe.de
Internet www.norwe.de
www.norwe.eu

NORWE Inc.

P.O. Box 25 11
North Canton, OH 44720-0511
United States of America

Telefon +1-330 497-8113
Telefax +1-330 305-0592
E-mail usa@norwe.com
Internet www.norwe.com