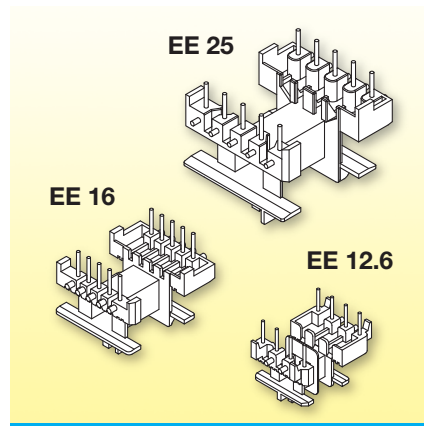


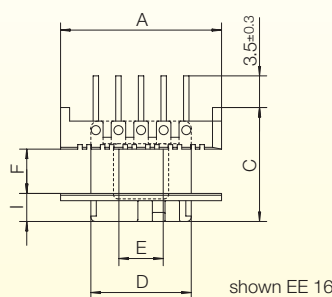
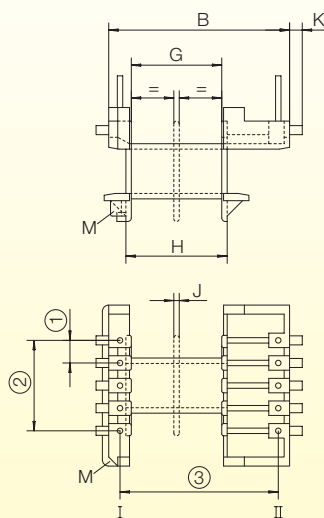
# Latest Products 2018

## Series EE horizontal with longer creepage-dimensions

NORWE now is preparing to expand the series of EE/M coilformers horizontal EE 12.6 to EE 25 with longer creepage-dimensions between ferrite and solder-pin.

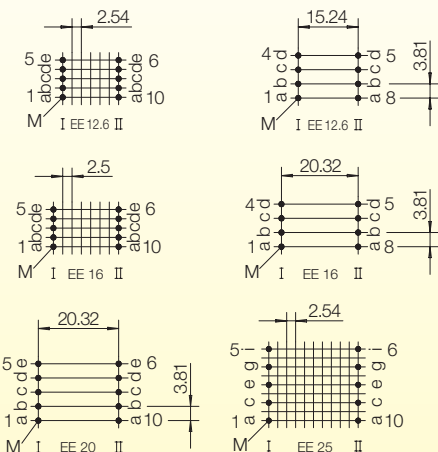


The design allows automatic winding also on NC winding machines. Special winding noses and also a wire routing provide tension-relief when binding on the wire. The coilformers have distance strips to avoid cold-solder joints into the PCB.



- Solder-pin
- 1\*) z607/ua (73263-212)
  - 2\*) z608/ua (73264-212)
  - 3\*) z809/ua (73295-212)

Grid / View pin-side



Type	Code	A	B	C	D	E	F	G	H	I	J	K	①	②	③	*)	
EE 12.6/1k/K9.5/7-6/2.54-eg/A RV250 nat.	N0136-106	14.2	17.9	11.2	8.7	3.9	3.9	7.5	8.7	2.4	-	1.7	2.54	10.16	15.24	1	
EE 12.6/2k/K9.5/7-6/2.54-eg/A RV250 nat.	N0137-106	14.2	17.9	11.2	8.7	3.9	3.9	7.5	8.7	2.4	0.6	1.7	2.54	10.16	15.24	1	
EE 12.6/1k/K9.5/7-6/3.81-d(15.24)/A RV250 nat.	N0138-106	14.2	17.8	11.9	8.7	3.9	3.9	7.5	8.7	2.4	-	1.7	3.81	11.43	15.24	2	
EE 12.6/2k/K9.5/7-6/3.81-d(15.24)/A RV250 nat.	N0139-106	14.2	17.8	11.9	8.7	3.9	3.9	7.5	8.7	2.4	0.6	1.7	3.81	11.43	15.24	2	
EE 16/1k/K9/7-6/2.5-eh/A RV250 nat.	09863-106	<b>NEW</b>	17.8	20.0	12.6	11.1	4.9	4.9	10.0	11.2	3.1	-	1.4	2.50	10.00	17.50	1
EE 16/2k/K9/7-6/2.5-eh/A RV250 nat.	09864-106	<b>NEW</b>	17.8	20.0	12.6	11.1	4.9	4.9	10.0	11.2	3.1	0.6	1.4	2.50	10.00	17.50	1
EE 16/1k/K11/7-6/3.81-d(20.32)/A RV250 nat.	09873-106	<b>NEW</b>	17.8	22.7	13.7	11.1	4.9	4.9	10.0	11.2	3.1	-	1.2	3.81	11.43	20.32	2
EE 16/2k/K11/7-6/3.81-d(20.32)/A RV250 nat.	09874-106	<b>NEW</b>	17.8	22.7	13.7	11.1	4.9	4.9	10.0	11.2	3.1	0.6	1.2	3.81	11.43	20.32	2
EE 20/1k/K11/7-8/3.81-e(20.32)/A RV250 nat.	09990-106	<b>NEW</b>	22.0	23.3	16.6	13.9	6.1	6.1	12.5	13.7	3.9	-	1.5	3.81	15.24	20.32	3
EE 20/2k/K11/7-8/3.81-e(20.32)/A RV250 nat.	09991-106	<b>NEW</b>	22.0	23.3	16.6	13.9	6.1	6.1	12.5	13.7	3.9	0.6	1.5	3.81	15.24	20.32	3
EE 25/1k/K12/7-8/5.08-ik/A RV250 nat.	10165-106		27.5	29.5	20.2	17.3	7.7	7.7	15.6	17.0	4.8	-	1.8	5.08	20.32	25.40	3
EE 25/2k/K12/7-8/5.08-ik/A RV250 nat.	10166-106	<b>NEW</b>	27.5	29.5	20.2	17.3	7.7	7.7	15.6	17.0	4.8	0.7	1.8	5.08	20.32	25.40	3

The coilformers are made in grf Polyamide PA66 of type A RV250 nat. (RTI long-range temperature +100°C). Pin material is tin bronze, tinned. Maximum solder temperature 350°C, 2sec. Special materials – e.g. irradiated cross-linked – and designs on request, dimensions in mm.

© 07/2018 by NORWE GmbH

Warranties:  
refer to Terms and Conditions of Sale

NORWE GmbH

Postfach 13 56  
51691 Bergneustadt  
Paulstraße 5, Pernze  
51702 Bergneustadt  
Deutschland

Telefon +49 (0) 27 63-807-0  
Telefax +49 (0) 27 63-807-77  
E-mail [verkauf@norwe.de](mailto:verkauf@norwe.de)  
Internet [www.norwe.de](http://www.norwe.de)  
[www.norwe.eu](http://www.norwe.eu)

NORWE Inc.

P.O. Box 25 11  
North Canton, OH 44720-0511  
United States of America  
Telefon +1-330 497-8113  
Telefax +1-330 305-0592  
E-mail [usa@norwe.com](mailto:usa@norwe.com)  
Internet [www.norwe.com](http://www.norwe.com)



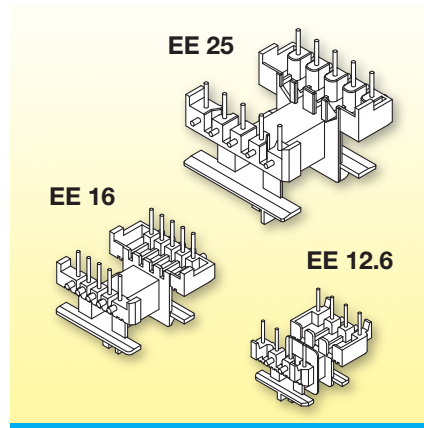
Valid version of  
data sheet online

QR Online-Version

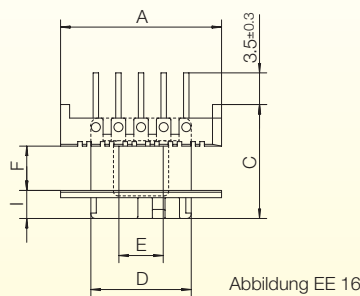
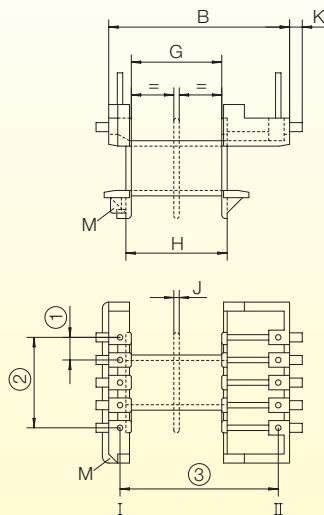
# Neuheiten 2018

## Serie EE Horizontal mit längeren Kriechstrecken

Aktuell plant NORWE eine Serienerweiterung der Spulenkörper EE/M Horizontal, EE 12.6 bis EE 25 mit verlängerter Kriechstrecke zwischen Ferritkern und Lötstift.

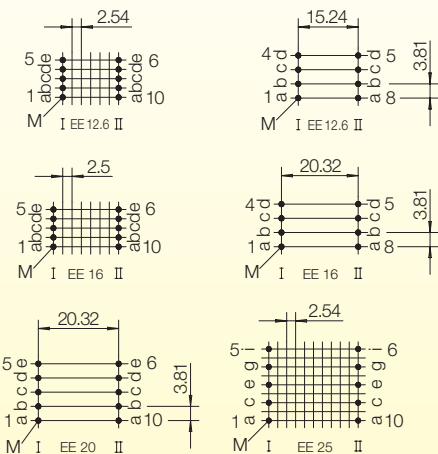


Alle Bauformen lassen sich rationell auf numerisch gesteuerten Wickelmaschinen verarbeiten. Spezielle Umwickelzapfen und die Drahtführung gewährleisten eine stets zugentlastete Anwicklung. Abstandsfüße zur Printplatte verhindern Blindlötlötungen durch abgedeckte Printlöcher.



- Lötstift
- 1\*) z607/ua (73263-212)
  - 2\*) z608/ua (73264-212)
  - 3\*) z809/ua (73295-212)

Rasterplan / Ansicht Lötstiftseite



Type	Code	A	B	C	D	E	F	G	H	I	J	K	①	②	③	*)
EE 12.6/1k/K9.5/7-6/2.54-eg/A RV250 nat.	N0136-106 <a href="#">auf Anfrage</a>	14.2	17.9	11.2	8.7	3.9	3.9	7.5	8.7	2.4	-	1.7	2.54	10.16	15.24	1
EE 12.6/2k/K9.5/7-6/2.54-eg/A RV250 nat.	N0137-106 <a href="#">auf Anfrage</a>	14.2	17.9	11.2	8.7	3.9	3.9	7.5	8.7	2.4	0.6	1.7	2.54	10.16	15.24	1
EE 12.6/1k/K9.5/7-6/3.81-d(15.24)/A RV250 nat.	N0138-106 <a href="#">auf Anfrage</a>	14.2	17.8	11.9	8.7	3.9	3.9	7.5	8.7	2.4	-	1.7	3.81	11.43	15.24	2
EE 12.6/2k/K9.5/7-6/3.81-d(15.24)/A RV250 nat.	N0139-106 <a href="#">auf Anfrage</a>	14.2	17.8	11.9	8.7	3.9	3.9	7.5	8.7	2.4	0.6	1.7	3.81	11.43	15.24	2
EE 16/1k/K9/7-6/2.5-eh/A RV250 nat.	09863-106 <b>NEU</b>	17.8	20.0	12.6	11.1	4.9	4.9	10.0	11.2	3.1	-	1.4	2.50	10.00	17.50	1
EE 16/2k/K9/7-6/2.5-eh/A RV250 nat.	09864-106 <b>NEU</b>	17.8	20.0	12.6	11.1	4.9	4.9	10.0	11.2	3.1	0.6	1.4	2.50	10.00	17.50	1
EE 16/1k/K11/7-6/3.81-d(20.32)/A RV250 nat.	09873-106 <b>NEU</b>	17.8	22.7	13.7	11.1	4.9	4.9	10.0	11.2	3.1	-	1.2	3.81	11.43	20.32	2
EE 16/2k/K11/7-6/3.81-d(20.32)/A RV250 nat.	09874-106 <b>NEU</b>	17.8	22.7	13.7	11.1	4.9	4.9	10.0	11.2	3.1	0.6	1.2	3.81	11.43	20.32	2
EE 20/1k/K11/7-8/3.81-e(20.32)/A RV250 nat.	09990-106 <b>NEU</b>	22.0	23.3	16.6	13.9	6.1	6.1	12.5	13.7	3.9	-	1.5	3.81	15.24	20.32	3
EE 20/2k/K11/7-8/3.81-e(20.32)/A RV250 nat.	09991-106 <b>NEU</b>	22.0	23.3	16.6	13.9	6.1	6.1	12.5	13.7	3.9	0.6	1.5	3.81	15.24	20.32	3
EE 25/1k/K12/7-8/5.08-ik/A RV250 nat.	10165-106	27.5	29.5	20.2	17.3	7.7	7.7	15.6	17.0	4.8	-	1.8	5.08	20.32	25.40	3
EE 25/2k/K12/7-8/5.08-ik/A RV250 nat.	10166-106 <b>NEU</b>	27.5	29.5	20.2	17.3	7.7	7.7	15.6	17.0	4.8	0.7	1.8	5.08	20.32	25.40	3

Die Spulenkörper sind aus glasfaserverstärktem Polyamid PA66, A RV250 nat. (RTI Dauergebrauchstemperatur +100°C). Das Lötstiftmaterial ist Zinnbronze, verzinkt. Maximale Löttemperatur 350°C bis 2 Sekunden. Sondermaterialien – z.B. Strahlenvernetzung – und Sonderausführungen auf Anfrage, Abmessungen in mm.

© 07/2018 by NORWE GmbH

Gewährleistungshinweise siehe Verkaufs- und Lieferbedingungen

**NORWE GmbH**

Postfach 13 56  
51691 Bergneustadt  
Paulstraße 5, Pernze  
51702 Bergneustadt  
Deutschland

Telefon +49 (0) 27 63-807-0  
Telefax +49 (0) 27 63-807-77  
E-mail [verkauf@norwe.de](mailto:verkauf@norwe.de)  
Internet [www.norwe.de](http://www.norwe.de)  
[www.norwe.eu](http://www.norwe.eu)

**NORWE Inc.**

P.O. Box 25 11  
North Canton, OH 44720-0511  
United States of America  
Telefon +1-330 497-8113  
Telefax +1-330 305-0592  
E-mail [usa@norwe.com](mailto:usa@norwe.com)  
Internet [www.norwe.com](http://www.norwe.com)



Aktueller Stand des Datenblattes online

QR Online-Version